

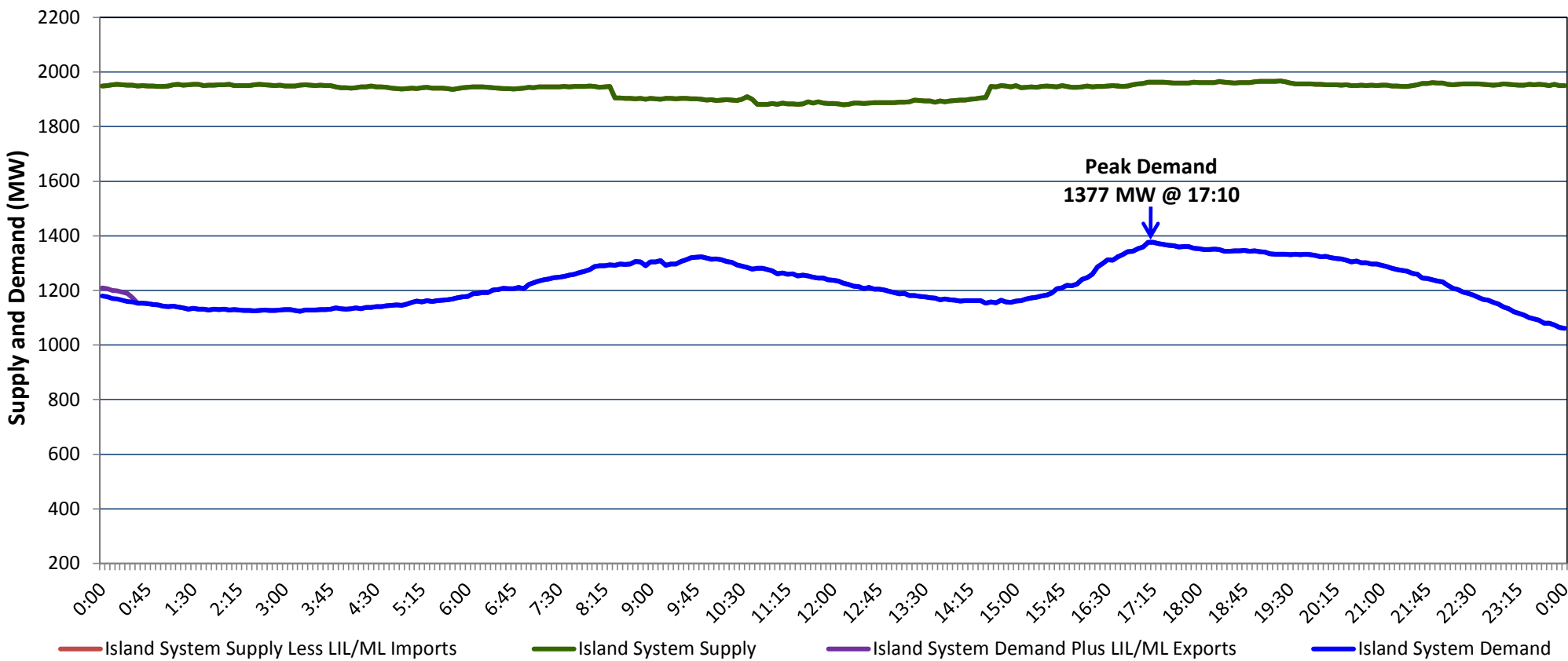
Newfoundland Labrador Hydro (NLH)

Supply and Demand Status Report Filed Monday, November 26, 2018

Section 1

Island Interconnected System Supply, Demand & Exports

Actual 24 Hour System Performance For Sunday, November 25, 2018



Supply Notes For November 25, 2018

- 1,2
- AAs of 0935 hours, November 23, 2018, Hardwoods Gas Turbine available at 25 MW (50 MW).
- BAs of 2303 hours, November 24, 2018, Holyrood Unit 1 available at 140 MW (170 MW).
- CAt 0824 hours, November 25, 2018, Granite Canal Unit unavailable (40 MW).
- DAt 1431 hours, November 25, 2018, Granite Canal Unit available (40 MW).

Section 2

Island Interconnected Supply and Demand

| Mon, Nov 26, 2018 | Island System Outlook ³ | | | Seven-Day Forecast | Temperature (°C) | | Island System Daily Peak Demand (MW) | |
|--|--|----------------------------------|--|------------------------------|------------------|---------|--------------------------------------|-------|
| | | | | | Morning | Evening | | |
| Available Island System Supply: ⁵ NLH Island Generation: ⁴ NLH Island Power Purchases: ⁶ Other Island Generation: ML/LIL Imports: Current St. John's Temperature & Windchill: 1 °C 7-Day Island Peak Demand Forecast: | 1,870 1,565 110 195 - N/A | MW MW MW MW MW °C | | Monday, November 26, 2018 | 1 | 2 | 1,300 | 1,205 |
| | | | | Tuesday, November 27, 2018 | 2 | 2 | 1,325 | 1,230 |
| | | | | Wednesday, November 28, 2018 | 1 | 2 | 1,350 | 1,254 |
| | | | | Thursday, November 29, 2018 | 3 | 1 | 1,375 | 1,279 |
| | | | | Friday, November 30, 2018 | 2 | 0 | 1,360 | 1,264 |
| | | | | Saturday, December 01, 2018 | 0 | -1 | 1,330 | 1,235 |
| | | | | Sunday, December 02, 2018 | -2 | 0 | 1,290 | 1,195 |

Supply Notes For November 26, 2018

- 3
- EAt 0034 hours, November 26, 2018, Hinds Lake Unit unavailable due to planned outage (75 MW).

- Notes:
1. Generation outages for running and corrective maintenance are included. These are not unusual for power system operations. They generally do not impact customer supply. The power system operators schedule outages to system equipment whenever possible to coincide with periods when customer demands are low and sufficient supply reserves are available. However, from time to time equipment outages are necessary and reserves may be impacted.
2. Due to the Island system having no synchronous connections to the larger North American grid, when there is a sudden loss of large generating units there may be a requirement for some customer's load to be interrupted for short periods to bring generation output equal to customer demand. This automatic action of power system protection, referred to as under frequency load shedding (UFLS), is necessary to ensure the integrity and reliability of system equipment. Under frequency events have typically occurred 5 to 8 times per year on the Island Interconnected System and the resultant customer load interruptions are generally less than 30 minutes. With the activation of the Maritime Link frequency controller during the winter of 2018, UFLS events have occurred less frequently.
3. As of 0800 Hours.
4. Gross output including station service at Holyrood (24.5 MW) and improved NLH hydraulic output due to water levels (35 MW).
5. Gross output from all Island sources (including Note 4).
6. NLH Island Power Purchases include: CBPP Co-Gen, Nalcor Exploits, Rattle Brook, Star Lake, Wind Generation and capacity assistance (when applicable).
7. Adjusted for curtailable load, market activities and the impact of voltage reduction when applicable.

Section 3

Island Peak Demand Information

Previous Day Actual Peak and Current Day Forecast Peak

| | | | |
|-------------------|--|-------|----------|
| Sun, Nov 25, 2018 | Actual Island Peak Demand ⁸ | 17:10 | 1,377 MW |
| Mon, Nov 26, 2018 | Forecast Island Peak Demand | | 1,300 MW |

- Notes:
8. Island Demand / LIL / ML Exports (where applicable) is supplied by NLH generation and purchases, plus generation owned and operated by Newfoundland Power and Corner Brook Pulp & Paper (Deer Lake Power, DLP).